



SMARTOP 
by Leisure Concepts

Smartop Parts Catalog

Smartop Lift Systems

SMARTOP Upright Cover Lift system	4
SMARTOP Upright 2.0	10
SMARTOP Upright 3.0	16
SMARTOP Upright 3.0 - New Design	22
SMARTOP Deck Mount Lift System	28
SMARTOP Vanish Cover Lift System	31
SMARTOP Vanish XL	36
SMARTOP Vanish XL - New Design	43
SMARTOP Swim Spa	50
SMARTOP Miscellaneous Parts	52

*All Kits/Sets come with a Left and Right and there corresponding screws.

Smartop Parts Catalog Order Process

Step One: Identify the model of Smartop you need parts for

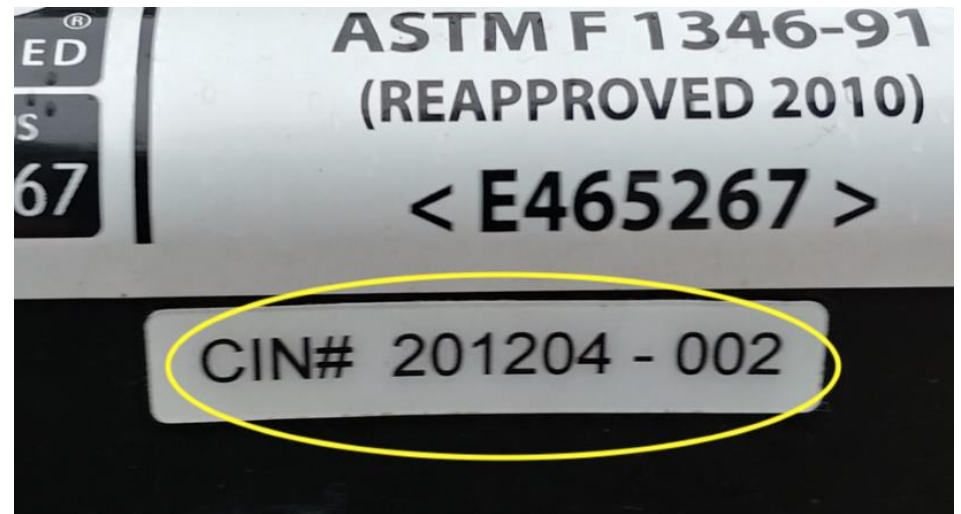
Step Two: Identify parts needed and there corresponding part number

Step Three: Fill out any Templates for select parts.

(Smart Shield, Skirting Kit)

Step Four: Email

nick@leisureconcepts.com with part numbers and the Cover's CIN number



*For Shock purchase please refer to image for shock strength



Smartop Upright Cover Lift System/EAS I

March 2019 and down



Smartop Pivot Arm Set

Less than 94" - **101070**

\$65.99

Greater Than 94" - **100280**

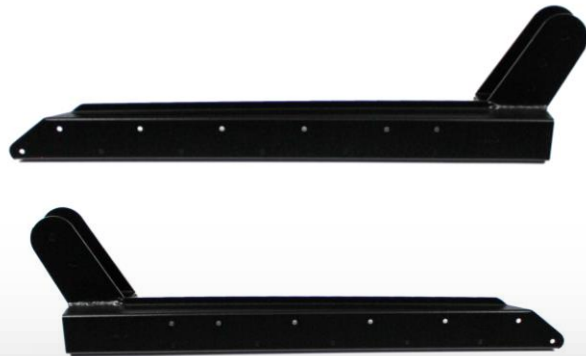
\$87.99



Smartop Upright Screw Kit

101189

\$12.00



Aluminum Bracket Kit

102095

\$131.99

*Part Numbers Are Displayed In Red Font



Support Arm Set (Candy Cane)

102096

\$87.99

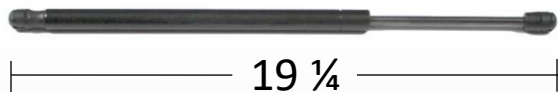


Smartop Upright Lock Bar

100274

\$10.00

Upright Shock - \$21.99



Part Number	Shock Strength	Cover Size
101075	500N	83 -
101388	600N	83" - 86"
101389	700N	86" - 94"
101390	800N	94" +

*Part Numbers Are Displayed In Red Font



Inner/Outer Housing (Moon)
Left – 101355 / Right – 101357
\$32.00



EAS Mounting Bracket Kit
102097
\$48.00 Set



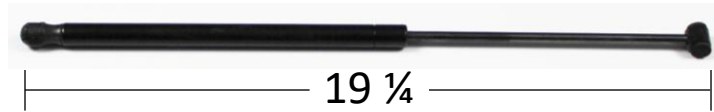
Smartop EAS Latch Bar
102129
For 2.0, 3.0, and Vanish XL
\$4.00



Smartop EAS Latch Catch Knob
100750
\$0.50

*Part Numbers Are Displayed In Red Font

Smartop EAS I Shock
Dual Shock System
\$21.99



Part Number	Shock Strength	Cover Size
101333	30#	80" –
101334	40#	80" – 84"
101335	50#	84" – 86"
101336	60#	86" – 88"
101607	70#	88" – 94"
101631	80#	94" +

EAS I Shock Mount Kit

102098

\$40.00

Smartop Cable Lock Kit Side
& Rear Lock Assembly

101120

\$54.99

*Part Numbers Are Displayed In Red Font



Hinge Bracket Without Metal Plate Kit

102099

\$21.99

*Part Numbers Are Displayed In Red Font



Smartop Upright 2.0 Cover Lift System/EASII

March 2019 and down



Smartop Upright 2.0 Rear Cover
Mounting Plate

For Covers 80" and Below
36" - **101793** \$219.99

For Covers 81" and Above
43"- **101792**



Cabinet Reinforcement Bracket

For Covers 80" and Below
36.5" - **101800** \$42.00

For Covers 81" and Above
43.75" - **101801** \$48.00

Upright 2.0 Cover Lift Shock - \$32.99



Part Number	Shock Strength	Cover Size
101766	300N	80" –
101767	400N	80" – 83"
101768	500N	83" – 86"
101769	600N	86" - 88"
101770	700N	88" – 94"
101771	800N	94" +

*Part Numbers Are Displayed In Red Font



Upright 2.0 Cabinet Bracket Kit

102100

\$80.00



Upright 2.0 Cabinet Bracket Extension

101783

\$15.00



Rear Cabinet Mounting Bracket Kit

102101

\$110.99

*Part Numbers Are Displayed In Red Font



Locking Shock Tube

(Does not Include Shock)

101795

\$10.99



Smartop Upright 2.0 Screw Kit

101820

\$12.00



Shock Mount

101706

\$10.00

*Part Numbers Are Displayed In Red Font



EAS Mounting Bracket Kit

Front to Back Measurement
less than 94" - **102102**
\$48.00

Front to Back Measurement
greater than 94" - **102117**
\$65.99



EAS II Hinge Bracket With Metal Plate Kit

102103
\$65.99



EAS II Handle and Bolt

101596
\$8.00



EAS II Shock Mount

101706
\$10.00

*Part Numbers Are Displayed In Red Font



Smartop EAS Latch Bar

102129

(For 2.0, 3.0, and Vanish XL)

\$4.00



Smartop EAS Latch Catch Knob

100750

\$0.50

Smartop EAS II Shock - \$21.99



Part Number	Shock Strength	Cover Size
101510	335N	80" -
101075	500N	80" - 84"
101388	600N	84" - 88"
101389	700N	88" - 94"
101390	800N	94" +

*Part Numbers Are Displayed In Red Font



Smartop Upright 3.0/EAS II

March 2019 – December 2023



Smartop Upright 3.0/3.0R Cover Bracket Arm

Left – **102175** / Right – **102181**

April-19 & Up

\$40.00 each



Cover Bracket Mount Universal

102174

Requires 2 per Smartop

\$24.00 each



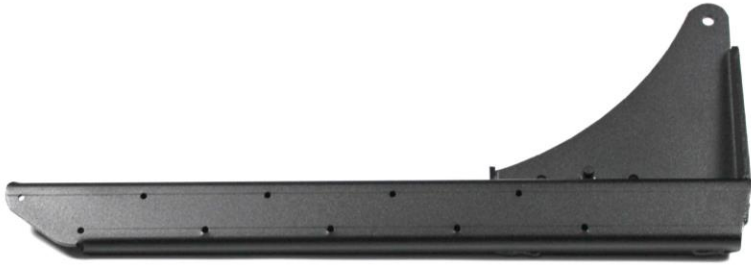
Upright 3.0 Screw Kit

101926

All Years

\$18.00

*Part Numbers Are Displayed In Red Font



Smartop Upright 3.0 Cabinet Bracket Kit

102105

\$131.99

Smartop Upright 3.0R Cabinet Brackets

Left – **101990** / Right – **101991**

\$80.00 each



Smartop Upright 3.0 Artic Spa Bracket Kit

102106

\$131.99



Smartop Upright 3.0 Shim

101084

\$25.00

*Part Numbers Are Displayed In Red Font

Smartop Upright 3.0 cover Lift System

Upright 3.0 Cover Lift Shock - \$32.99



Part Number	Shock Strength	Cover size
101796	400N	84" –
101880	500N	84" – 86"
101881	600N	86" – 88"
101882	700N	88" – 94"
101883	850N	94" – 100"
101884	950N	100 +



Upright 3.0 Conversion Kit

*For Smartops Without Interchangeable Brackets

101929

\$451.99

Upright 3.0 Lifter Kit

*For Smartops With Interchangeable Brackets

102183

\$404.00

*Part Numbers Are Displayed In Red Font



EAS Mounting Bracket Kit

Front to Back Measurement

less than 94" - **102102**

\$48.00

Front to Back Measurement

greater than 94" - **102117**

\$65.99



EAS II Hinge Bracket With Metal Plate Kit

102103

\$65.99



EAS II Handle and Bolt

101596

\$8.00



EAS II Shock Mount

101706

\$10.00

*Part Numbers Are Displayed In Red Font



Smartop EAS Latch Bar

101615

(For 2.0, 3.0, and VXL)

\$4.00



Smartop EAS Latch Catch Knob

100750

\$0.50

Smartop EAS II Shock - \$21.99



Part Number	Shock Strength	Cover Size
101510	335N	80" –
101075	500N	80" – 84"
101388	600N	84" – 88"
101389	700N	88" – 94"
101390	800N	94" +

*Part Numbers Are Displayed In Red Font

Smartop EAS II



Smartop Upright 3.0/EAS II – New Design

January 2024 - Current



Smartop Upright 3.0/3.0R Cover Bracket Arm

Left – **102175** / Right – **102181**

April-19 & Up

\$40.00 each



Cover Bracket Mount Universal

102289

Requires 2 per Smartop

\$24.00 each



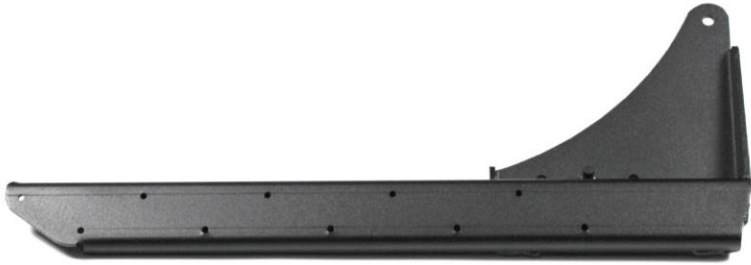
Upright 3.0 Screw Kit

101926

All Years

\$18.00

*Part Numbers Are Displayed In Red Font



Smartop Upright 3.0 Cabinet Bracket Kit

102105

\$131.99

Smartop Upright 3.0R Cabinet Brackets

Left – **101990** / Right – **101991**

\$80.00 each



Smartop Upright 3.0 Artic Spa Bracket Kit

102106

\$131.99



Smartop Upright 3.0 Shim

101084

\$25.00

*Part Numbers Are Displayed In Red Font

Smartop Upright 3.0 cover Lift System

Upright 3.0 Cover Lift Shock - \$32.99



Part Number	Shock Strength	Cover size
101796	400N	84" –
101880	500N	84" – 86"
101881	600N	86" – 88"
101882	700N	88" – 94"
101883	850N	94" – 100"
101884	950N	100 +



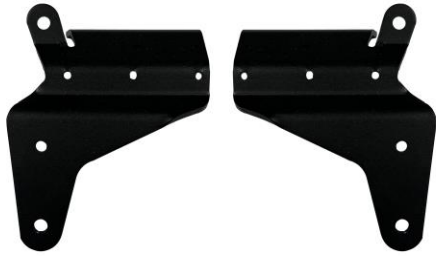
Upright 3.0 Lifter Kit

*For Smartops With Interchangeable Brackets

102183

\$404.00

*Part Numbers Are Displayed In Red Font



Beveled EAS Mounting Bracket Kit

Front to Back Measurement
less than 94" - **102304**

\$64.00

Front to Back Measurement
greater than 94" - **102305**

\$68.00



Beveled Front Side Aluminum Hinge Bracket Kit

102310

\$44.00



EAS II Handle and Bolt

101596

\$8.00



Beveled EAS II Shock Mount

102291

\$16.00

*Part Numbers Are Displayed In Red Font



Smartop EAS Latch Bar
101615
 (For 2.0, 3.0, and VXL)
 \$4.00



Beveled Latch Bar Bracket
102295
 \$12.00



Smartop EAS Latch Catch Knob
100750
 \$0.50



Beveled Latch Catch Bracket
102295
 \$12.00

Smartop EAS II Shock - \$21.99



Part Number	Shock Strength	Cover Size
101510	335N	80" –
101075	500N	80" – 84"
101388	600N	84" – 88"
101389	700N	88" – 94"
101390	800N	94" +

*Part Numbers Are Displayed In Red Font

Smartop EAS II



Smartop Deck Mount Parts



ST Upright Deck Mount Bracket - 4" Kit
(Comes with 2 Shims)

102107

April 2019 & Up - \$53.99



ST Upright Deck Mount Bracket – 6" Kit
(Comes with 2 Shims)

102108

All Years - \$109.99



Deck Mount Shim (5 Shims to Achieve 1")

101970

April 2019 & Up - \$9.99

*Part Numbers Are Displayed In Red Font



Deck Mount Lock Down Kit

102046

All Years - \$36.00



Smartop Deck Mount Cover Bracket Extension Kit

102114

\$48.00

Smartop Deck Mount Screw Kit (Comes With Brackets)

101108

\$24.00

*Part Numbers Are Displayed In Red Font



Smartop Vanish Cover Lift System

March 2019 and Earlier



Support Arm Set(Candy Cane)

102096

\$87.99



Smartop Pivot Arm Set

Less than 94" - 101070

\$65.99

Greater Than 94" - 100280

\$87.99

*Part Numbers Are Displayed In Red Font

Smartop Vanish Lift System

Smartop Vanish Shock - \$21.99



Part Number	Shock Strength	Cover Size
101075	500N	80" – 84"
101388	600N	84" – 88"
101389	700N	88" – 94"
101390	800N	94" +

*Part Numbers Are Displayed In Red Font



Inner/Outer Housing (Moon)
Left – **101355** / Right – **101357**
\$32.00



EAS Mounting Bracket Kit
102097
\$48.00 Set



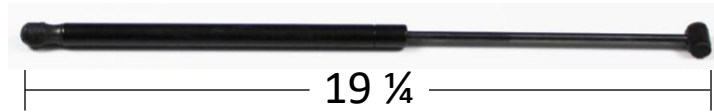
Smartop EAS Latch Bar
102129
For 2.0, 3.0, and Vanish XL
\$4.00



Smartop EAS Latch Catch Knob
100750
\$0.50

*Part Numbers Are Displayed In Red Font

Smartop EAS I Shock
Dual Shock System
\$21.99



Part Number	Shock Strength	Cover Size
101333	30#	80" –
101334	40#	80" – 84"
101335	50#	84" – 86"
101336	60#	86" – 88"
101607	70#	88" – 94"
101631	80#	94" +

EAS I Shock Mount Set

102098

\$20.00

Smartop Cable Lock Kit Side
& Rear Lock Assembly

101120

\$54.99

*Part Numbers Are Displayed In Red Font



Smartop Vanish XL Cover Lift System

April 2019 – December 2023



Vanish XL Cover Bracket Arm - Universal

102176

Requires 2 per Smartop

\$40.00 each



Cover Bracket Mount Universal

102174

Requires 2 per Smartop

\$24.00 each



Vanish XL Front Pivot Arm With Plate Set

102111

\$120.00



Vanish XL Rear Pivot Arm With Plate Set

102112

\$80.00

*Part Numbers Are Displayed In Red Font

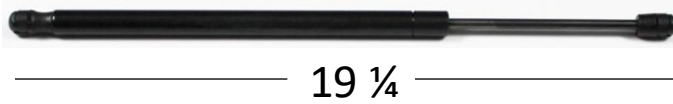


Vanish XL Foam Shim

$\frac{1}{4}$ "
Thick Left – **101836** / Right – **101837**
\$8.99 Each

$\frac{3}{4}$ "
Thick Left – **101838** / Right – **101839**
\$10.99 Each

Smartop Vanish XL Shock - \$21.99



*For replacing all shocks order two 75lb shocks and select one of the 500N – 800N Shocks per side.

Part Number	Shock Strength	Cover Size
101510	75lb	ALL
101075	500N	80" – 84"
101388	600N	84" – 88"
101389	700N	88" – 94"
101390	800N	94" +
102016	900N	(J400) 90" -
102017	1000N	(J400) 91" +

*Part Numbers Are Displayed In Red Font



Vanish XL Screw Kit

101765

\$17.99



Button Head Socket Bolt – **101758**

Washer – **100012**

Locknut – **100011**

\$1.00



Vanish XL Conversion Kit

102130

*For Smartops Without Interchangeable Bracket

\$501.99

Vanish XL Lifter Kit

102184

*For Smartops with Interchangeable bracket

\$454.00

*Part Numbers Are Displayed In Red Font



EAS Mounting Bracket Kit

Front to Back Measurement

less than 94" - **102102**

\$48.00

Front to Back Measurement

greater than 94" - **102117**

\$65.99



EAS II Hinge Bracket With Metal Plate Kit

102103

\$65.99



EAS II Handle and Bolt

101596

\$8.00



EAS II Shock Mount

101706

\$10.00

*Part Numbers Are Displayed In Red Font

Smartop EAS II



Smartop EAS Latch Bar

102129

(For 2.0, 3.0, and Vanish XL)

\$4.00



Smartop EAS Latch Catch Knob

100750

\$0.50

Smartop EAS II Shock - \$21.99



Part Number	Shock Strength	Cover Size
101510	335N	80" –
101075	500N	80" – 84"
101388	600N	84" – 88"
101389	700N	88" – 94"
101390	800N	94" +

*Part Numbers Are Displayed In Red Font



Smartop J400 Vanish XLR Bracket Kit L/R

102113

\$105.99

*Part Numbers Are Displayed In Red Font

Smartop J400 Components



Smartop Vanish XL
Cover Lift System – New
Design

January 2024 to Current



Vanish XL Cover Bracket Arm - Universal

102176

Requires 2 per Smartop

\$40.00 each



Cover Bracket Mount Universal

102289

Requires 2 per Smartop

\$24.00 each



Vanish XL Front Pivot Arm With Plate Set

102111

\$120.00



Vanish XL Rear Pivot Arm With Plate Set

102112

\$80.00

*Part Numbers Are Displayed In Red Font

Vanish XL Foam Shim



1/4" Thick Left – **101836** / Right – **101837**
 \$8.99 Each

3/4" Thick Left – **101838** / Right – **101839**
 \$10.99 Each

Smartop Vanish XL Shock - \$21.99



*For replacing all shocks order two 75lb shocks and select one of the 500N – 800N Shocks per side.

Part Number	Shock Strength	Cover Size
101510	75lb	ALL
101075	500N	80" – 84"
101388	600N	84" – 88"
101389	700N	88" – 94"
101390	800N	94" +
102016	900N	(J400) 84"
102017	1000N	(J400) 91" +

*Part Numbers Are Displayed In Red Font



Vanish XL Screw Kit

101765

\$17.99



Button Head Socket Bolt – **101758**

Washer – **100012**

Locknut – **100011**

\$1.00



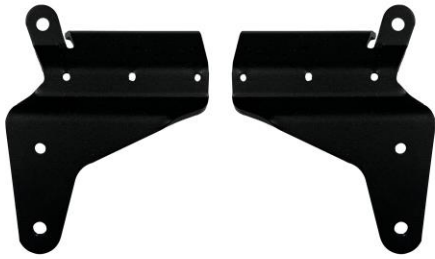
Vanish XL Lifter Kit

102184

*For Smartops with Interchangeable bracket

\$454.00

*Part Numbers Are Displayed In Red Font



Beveled EAS Mounting Bracket Kit - \$64.00

Front to Back Measurement

less than 94" - **102304**

\$64.00

Front to Back Measurement

greater than 94" - **102305**

\$68.00



Beveled Front Side Aluminum Hinge Bracket Kit

102310

\$44.00



EAS II Handle and Bolt

101596

\$8.00



Beveled EAS II Shock Mount

102291

\$16.00

*Part Numbers Are Displayed In Red Font

Smartop EAS II



Smartop EAS Latch Bar
101615
 (For 2.0, 3.0, and VXL)
 \$4.00



Beveled Latch Bar Bracket
102295
 \$12.00

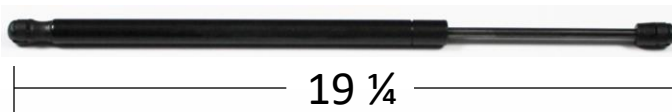


Smartop EAS Latch Catch Knob
100750
 \$0.50



Beveled Latch Catch Bracket
102295
 \$12.00

Smartop EAS II Shock - \$21.99



Part Number	Shock Strength	Cover Size
101510	335N	80" –
101075	500N	80" – 84"
101388	600N	84" – 88"
101389	700N	88" – 94"
101390	800N	94" +

*Part Numbers Are Displayed In Red Font



Smartop J400 Vanish XLR Bracket Kit L/R

102113

\$105.99

*Part Numbers Are Displayed In Red Font

Smartop J400 Components



Smartop Swim Spa

All Models

Swim Spa EAS II Mounting Bracket Kit

Old Design (2019 – 2023)



New Design (2024 – Present)



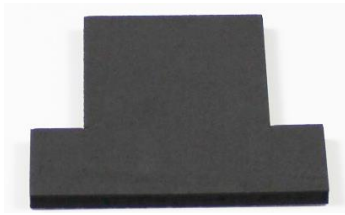
Cover Length	Part	Part Number	Cost
180" and Less	EAS II Mounting Bracket	102102	\$48.00
180" And Greater	Extended EAS II Mounting Bracket	102117	\$65.99

Cover Length	Part	Part Number	Cost
180" and Less	EAS II Mounting Bracket	102304	\$64.00
180" And Greater	Extended EAS II Mounting Bracket	102305	\$68.00

*Part Numbers Are Displayed In Red Font



Smartop Miscellaneous Parts



Smartop Wedge "T" Foam

102037

\$4.00



Beveled Trim Smartop Wedge "T" Foam
(2024 - Present)

102311

\$4.00



1/8" Foam Strip

102040

\$2.00

1/4" Foam Strip

102168

\$4.00



Thermal Seal Control Pad – 19"

101079

\$4.00

*Part Numbers Are Displayed In Red Font



Smartop Hinge Strip

2 3/8" Wide – 102165

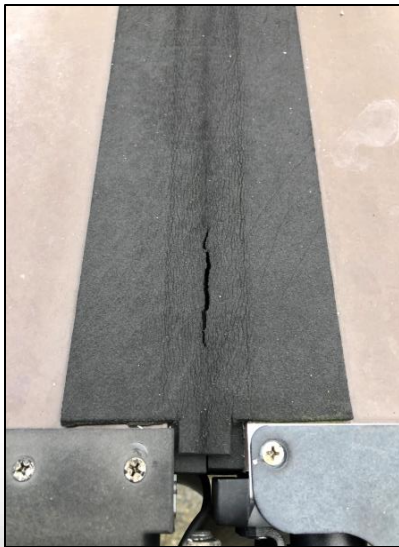
2 13/16" Wide – 101671

4" Wide – 102166



*Please contact Nick@leisureconcepts.com

With CIN number for size needed



Smartop Hinge Bridge Kit

Hinge length under 95" - 101680

Hinge Length 95" - 105" - 102167

\$110.00

*Part Numbers Are Displayed In Red Font

Miscellaneous Smartop Parts

Corner With Sealing Tape



Smartop Plastic Corner



Corner Radius

Corner With Sealing Tape

Smartop Plastic Corner

2"

102041

101179

6"

102042

101030

8"

102043

101031

10"

102044

101187

12"

102045

101032

\$13.99

\$19.99

*Part Numbers Are Displayed In Red Font

Beveled Edge Smartop Corners (2024 - Present)

Beveled Smartop Corner Top – 3"

102284

\$10.00



Beveled Smartop Corner Bottom – 3"

102285

\$10.00



Beveled Smartop Corner Top – 8"

102286

\$12.00



Beveled Smartop Corner Bottom – 8"

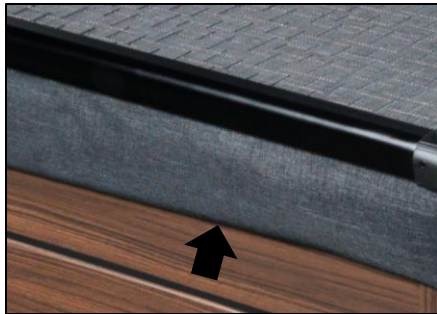
102287

\$12.00



*Part Numbers Are Displayed In Red Font

\$32.99



Cover Size	Cover Rib (Support Spine) Left / Right
60" and Under	101657 / 101658
95" and Under	101642 / 101648
95" and Over	101653 / 101654

Skirting Kit With Wedge Cut

101181

\$219.99

*Fill Out Template Provided

New Style Skirting Kit With Wedge Cut (2024 – Present)

102313

\$219.99

*Fill Out Template Provided

*Part Numbers Are Displayed In Red Font

Smartop Beveled Trim – Black Anodized

(2024 – Present)

Beveled Trim – 40"

102280

\$43.99

Beveled Trim – 50"

102281

\$54.99

Beveled Trim – 80"

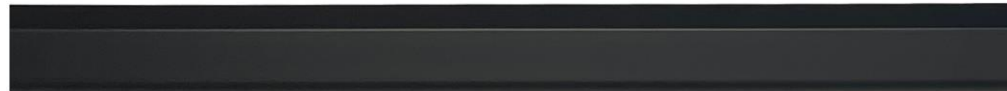
102282

\$87.99

Beveled Trim – 110"

102283

\$109.99



*Part Numbers Are Displayed In Red Font



Smartop Plastic Wedge Cap

101172

\$4.00



Smartop Wedge Channel – Upper & Lower

Left – **102051** / Right – **102052**

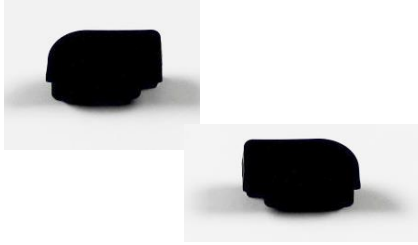
\$10.00 Each

Foam Wedge Channel – Upper & Lower

102053

\$40.00

*Part Numbers Are Displayed In Red Font



Smartop Side Trim End Caps

101044

\$2.00

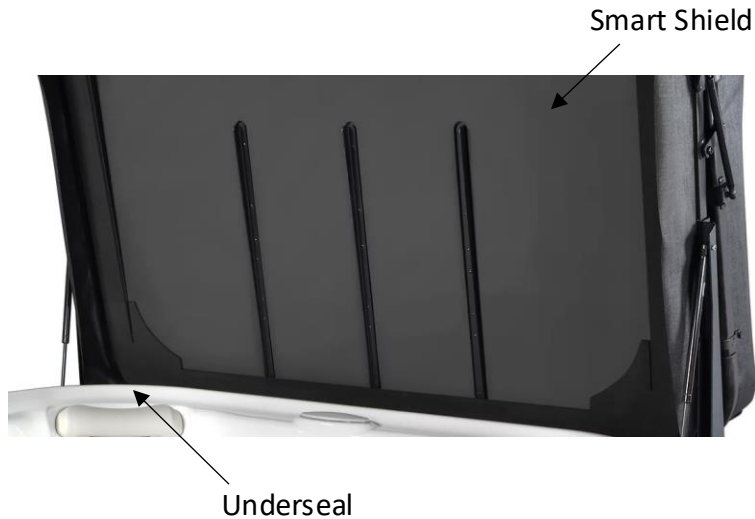


Beveled Smartop Side Trim End Caps (2024 – Present)

102314(L) / 102315(R)

\$5.00

*Part Numbers Are Displayed In Red Font



Smartshield 800 Black

101231

\$219.99

*Fill Out Template Provided

Smartop Underseal Kit

101407

\$88.00

*Provide Corner Radius and CIN Number

New Design Smartop Underseal Kit
(2024 - Present)

102312

\$120.00

*Provide Corner Radius and CIN Number

Smartop Primer

101341

\$32.99

*Part Numbers Are Displayed In Red Font

Miscellaneous Smartop Parts

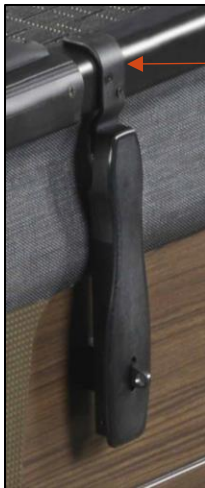
Smartop Lock Down Components - (2014 - 2023)



Smartop Cable Lock Kit
Side & Rear Lock Assembly

101120

\$54.99



Latch
Catch

Smart Sure Lock Latch Assembly Kit

101949

\$52.99

Smartop Sure Lock Latch - Individual

101871

\$21.99

Standard Latch Catch

102164 - \$5.00

Extended Latch Catch - Acrylic Greater than 6"

101903 - \$6.00

Swim Spa Latch Catch

101984 - \$6.00

*Part Numbers Are Displayed In Red Font

Smartop Lock Down Components - (2024 - Present)



Latch
Catch

Smart Sure Lock Latch Assembly Kit

101949

\$52.99

Smartop Sure Lock Latch - Individual

101871

\$21.99



2024 - Present

Beveled Standard Latch Catch – 3.5"

102225

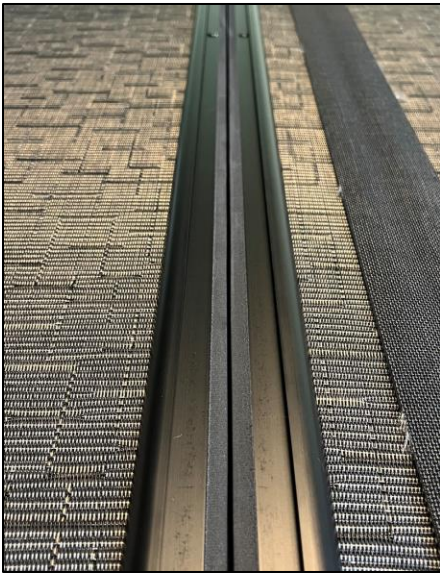
\$12.00

Beveled Swim Spa Latch Catch – 6"

102226

\$14.00

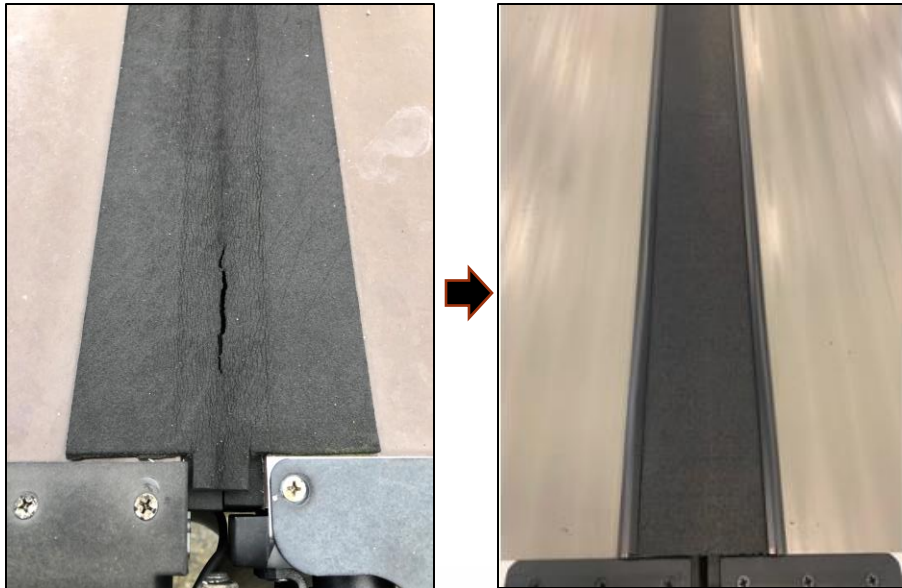
*Part Numbers Are Displayed In Red Font



Depending on the year of the cover and different foam sizes used, you may experience a gap in the cover.

Components Needed:

- Hinge Strip - **101671**
- 1/8" Foam Strips - **102040**
- Smartop Primer – **101341**



If your Smartop was manufactured prior to March 2018, and the adhesive-based strip looks like this.

Components Needed: Hinge Bridge Kit

- Hinge length under 95" - **101680**
- Hinge Length 95" - 105" - **102167**

*Our Hinge Bridge material has changed overtime and our new Smartops require different materials

*Part Numbers Are Displayed In Red Font

Smartop Sealant Kit With Primer



Smartop Sealant Kit – Up To 95"

102194

\$85.00

Smartop Sealant Kit – 95" And Greater

102195

\$100.00

Smartop Swim Spa Sealant Kit – Up to 193"

102196

\$170.00

Smartop Swim Spa Sealant Kit – Greater than 193"

102197

\$200.00

*Part Numbers Are Displayed In Red Font